

Installation Instructions for WIRE ROPE SPOOLING KIT

This instruction sheet and parts list provides information for service personnel to attach and use Spooling Kit 28114 for Force 5™ winch models FA2, FA2.5, FA5/F5T, FA7/FA7T and FA10.

INSTALLATION INSTRUCTIONS

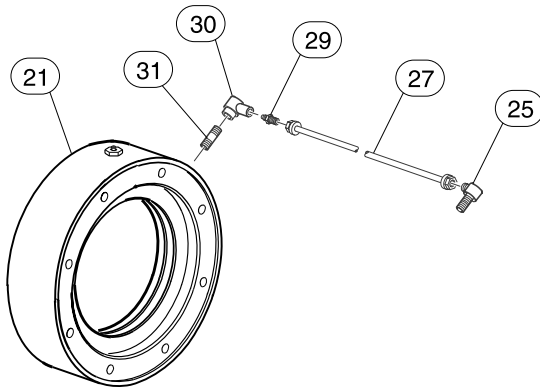
This instruction sheet is intended to be used in conjunction with the Parts, Operation and Maintenance Manual for Force 5 winch models FA2, FA2.5, FA5/FA5T, FA7/FA7T and FA10. Refer to the "OPERATION" and "MAINTENANCE" section in the appropriate Parts, Operation and Maintenance Manual.

Disassembly of Main Air Supply

Refer to Dwg. MHP2251 on page 1.

1. Shut off main air supply, bleed excess air from control valve and motor.
2. Remove fitting (25), tubing (27) and fitting (29) from dump valve (30) on brake housing (21).
3. Remove connections from inlet port side of control valve.

Brake Connection



(Dwg. MHP2251)

Item No.	Description of Part	Qty. Total	Part Number
21	Brake Housing	1	Contact Factory
25	Fitting, Elbow	1	
27	Tubing	1	
29	Fitting, Vented	1	
30	Dump Valve	1	
31	Fitting, Nipple	1	

Form MHD56230

Edition 1

November 2000

71380141

© 2000 Ingersoll-Rand Company

Assembly

Refer to Dwgs. MHP2251 on page 1 and MHP2229 on page 2.

1. Install plug (100) into brake line of control valve.
2. Install other parts as shown on assembly drawing to dump valve (30), refer to dwg. MHP2229 on page 2.

CAUTION

• A minimum of 60 psi (4.15 bar) air supply is needed to operate spooling kit, not to exceed 120 psi (8.27 bar). Damage to brake could occur if operating with less than 60 psi (4.15 bar). Use pressure guage (113) to monitor.

NOTICE

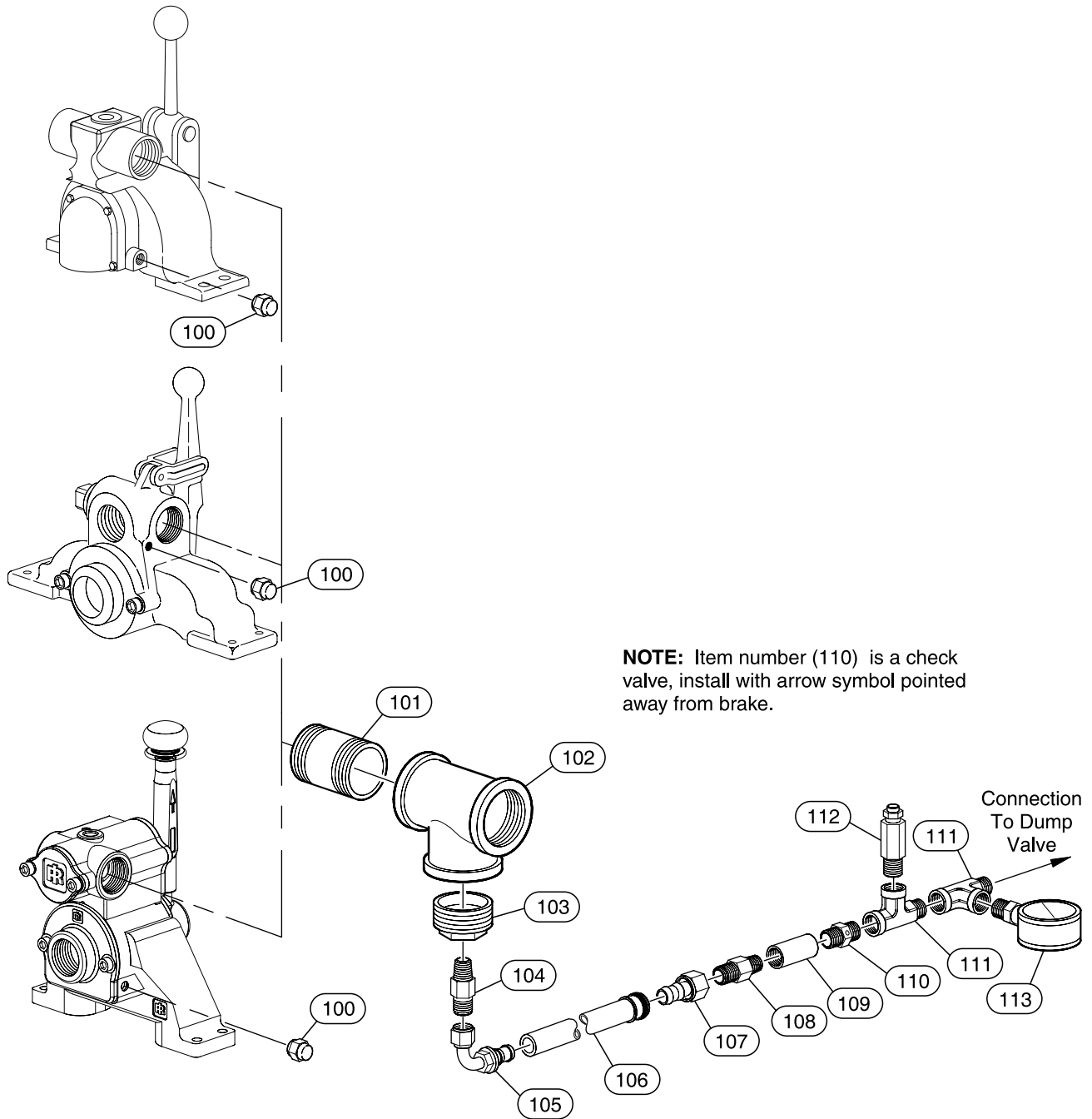
• Check valve (110) should be installed so that the arrow symbol on check valve is pointed away from brake.
• When spooling application is completed shut off air supply to control valve and motor, bleed excess air from fitting (112).

3. Remove spooling kit from dump valve (30) and fitting (100).
4. Reinstall brake fitting (25), tubing (27) and fitting (29) to dump valve (30).
5. Reinstall main air supply to control valve.

NOTICE

• Install spooling kit upstream or downstream from filter/lubricator. Keep filter/lubricator attached so that parts stay fully lubricated.

SPOOLING KIT ASSEMBLY DRAWING



(Dwg. MHP2229)

SPOOLING KIT PARTS LIST

Item No.	Description of Part	Qty. Total	Part Number
90	Spooling Kit (includes items 100 through 113)	1	28114
100	Plug	1	71111975
101	Fitting, Nipple	1	71068860
102	Fitting, Tee	1	51707
103	Fitting	1	71039416
104	Fitting, Nipple	2	51814
105	Fitting, Elbow	1	52179
106	Hose*	2 ft.	50923
107	Fitting, Hose Connector	1	51029
109	Fitting, Coupling	1	50861
110	Check Valve	1	71368609
111	Fitting, Tee	2	71063374
112	Bleed Valve	1	HU-264-4
113	Gauge	1	71378004

United States Office Locations

For Order Entry, Order Status and Technical Support

Ingersoll-Rand

P.O. Box 24046
2724 Sixth Avenue South
Seattle, WA 98124-0046
Phone: (206) 624-0466
Fax: (206) 624-6265

Ingersoll-Rand Distribution Center

P.O. Box 618
510 Hester Drive
White House, TN 37188
Phone: (615) 672-0321
Fax: (615) 672-0801

Web Site:

www.irco.com

Regional Sales Offices

Chicago, IL

888 Industrial Drive
Elmhurst, IL 60126
Phone: (630) 530-3800
Fax: (630) 530-3891

Detroit, MI

1872 Enterprise Drive
Rochester Hills, MI 48309
Phone: (248) 293-5700
Fax: (248) 293-5800

Houston, TX

450 Gears Road
Suite 210
Houston, TX 77067-4516
Phone: (281) 872-6800
Fax: (281) 872-6807

Los Angeles, CA

13107 Lakeland Road
Santa Fe Springs, CA 90670
Phone: (562) 777-0808
Fax: (562) 777-0818

Philadelphia, PA

P.O. Box 425
900 E. 8th Ave., Suite 103
King of Prussia, PA 19406
Phone: (610) 337-5930
Fax: (610) 337-5912

International

Offices and distributors in principal cities throughout the world. Contact the nearest **Ingersoll-Rand** office for the name and address of the distributor in your country or write/fax to:

Ingersoll-Rand

P.O. Box 24046
2724 Sixth Avenue South
Seattle, WA 98124-0046
USA
Phone: (206) 624-0466
Fax: (206) 624-6265

Canada

National Sales Office

Regional Warehouse

Toronto, Ontario
51 Worcester Road
Rexdale, Ontario
M9W 4K2
Phone: (416) 213-4500
Fax: (416) 213-4510
Order Desk
Fax: (416) 213-4506

Regional Sales Offices

Edmonton, Alberta

9720 - 54th Avenue
Edmonton, Alberta
T6E 0A9
Phone: (780) 438-5039
Fax: (780) 439-7382

Montreal, Quebec

3501 St. Charles Blvd.,
Suite 104
Kirkland, Quebec
H9H 4S3
Phone: (514) 695-9040
Fax: (514) 695-0963

British Columbia

1200 Cliveden Avenue.
Delta, B.C.
V3M 6G4
Phone: (604) 523-0803
Fax: (604) 523-0801

Latin America Operations

Ingersoll-Rand

Production Equipment Group

730 N.W. 107 Avenue
Suite 300, Miami, FL
33172-3107
Phone: (305) 559-0500
Fax: (305) 222-0864

Europe, Middle East and Africa

Ingersoll-Rand

Douai Operations

111, avenue Roger Salengro
59450 Sin Le Noble, France
Phone: (33) 3-27-93-08-08
Fax: (33) 3-27-93-08-00

Asia Pacific Operations

Ingersoll-Rand Asia Pacific

23/F., King's Road North Point
Hong Kong
Phone: (852) 2527 0183
Fax: (852) 2527 5976

Russia

Ingersoll-Rand

Kuznetsky Most 21/5
Entrance 3
Moscow 103895
Russia
Phone: (7) 501 923 9134
Fax: (7) 501 924 4625

Australia

Ingersoll-Rand Aust

1 Hartnett Drive
Seaford, Vic 3198
Australia
Phone: 61 3 95541642
Fax: 61 3 95541607